

# easy

Hawaiian Telcom

## QUICK START

GUIDE

## Welcome

Thank you for selecting Hawaiian Telcom High-Speed Internet, your connection to a whole new level of Internet enjoyment!

Your broadband service will be activated on the Service-Ready Date you were given when you placed your order.

This guide will walk you through step-by-step installation instructions. Getting started is easy.

## For More Information

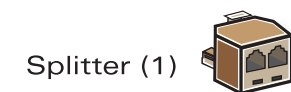
Visit [www.hawaiiantel.net](http://www.hawaiiantel.net) or call our 24/7 Local Internet Support Team at 643-4375.

Once you have completed your installation, please go to [support.hawaiiantel.com/reg](http://support.hawaiiantel.com/reg) to fill out a short survey letting us know how you did.

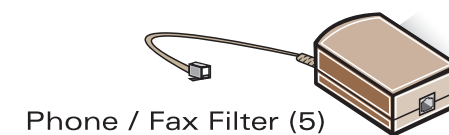
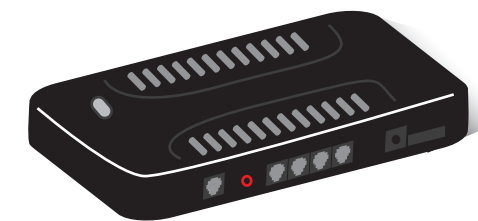
Looking for FREE WiFi access points? Hawaiian Telcom offers the most in the state. Click on the WiFi Locations link at [www.hawaiiantel.com](http://www.hawaiiantel.com) for a complete listing.



## What's included



Wireless Multi-Port Router (1)



Phone Cord (1)



Yellow Ethernet Cable (1)



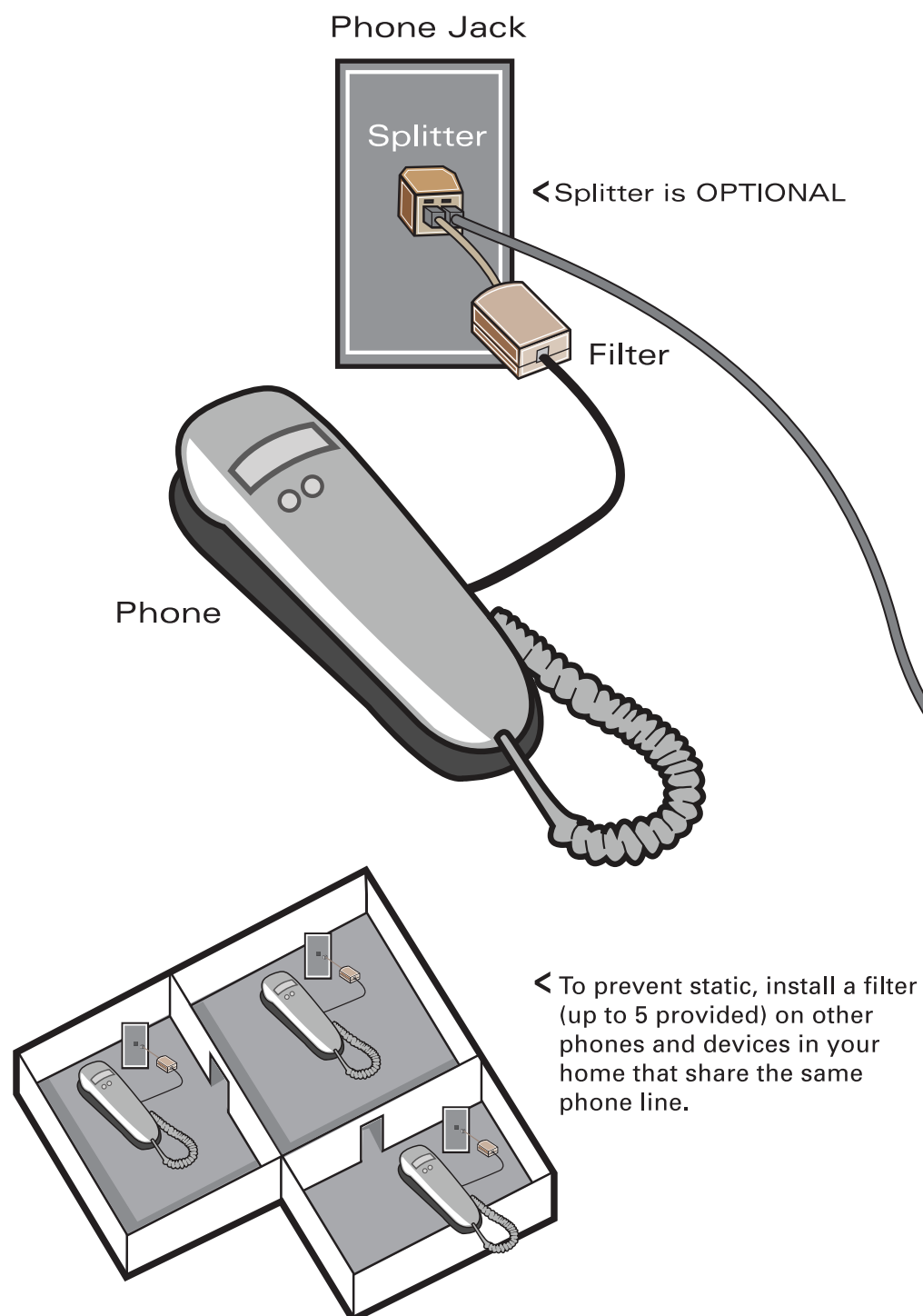
AC Adapter (1)



Products shown may vary.

# Installation Diagram

## 1 Splitter and Filters



## 2 Connect Modem

## 3 Connect Computer

Link your desktop computer or laptop to the router using the wireless (WiFi) connection or yellow Ethernet cable. Several devices can be connected to the router at once via WiFi and up to 4 devices using Ethernet cables. Your computer must have WiFi capability in order to connect wirelessly to the router.

## 4 Test Your Connection and Register

- Wait until the DSL, Power and Internet lights on the modem are green. If the light labeled DSL is still blinking after one minute, please call customer support at 643-4375.
- Open your web browser and go to: [support.hawaiiantel.com/reg](http://support.hawaiiantel.com/reg)
- Congratulations, you're online!

## 5 Create your wireless network

Follow the steps at [www.hawaiiantel.com/support/faq\\_wirelessmodems.htm](http://www.hawaiiantel.com/support/faq_wirelessmodems.htm) to customize your wireless network, set up your wireless security settings and read Quick Tips to maximize the effectiveness of your wireless modem.

This configuration applies to both WINDOWS and MAC users.