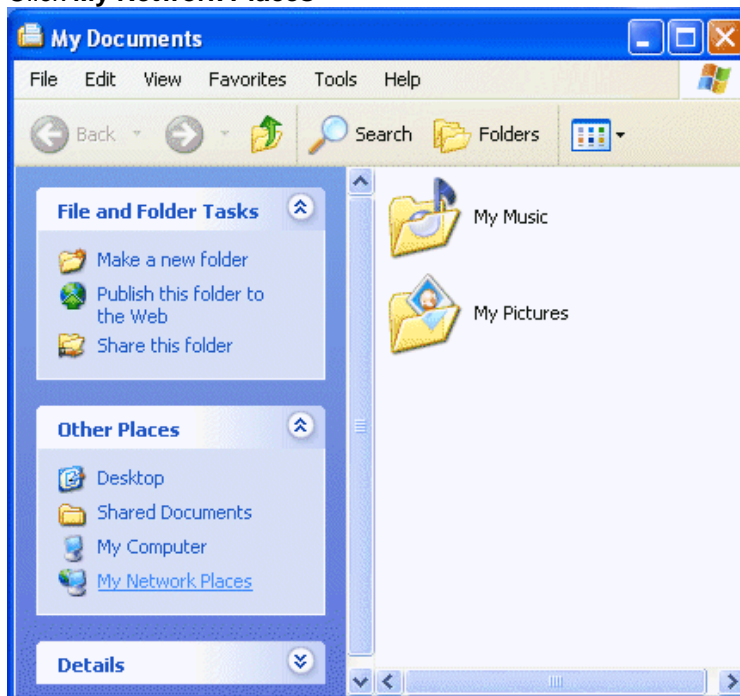


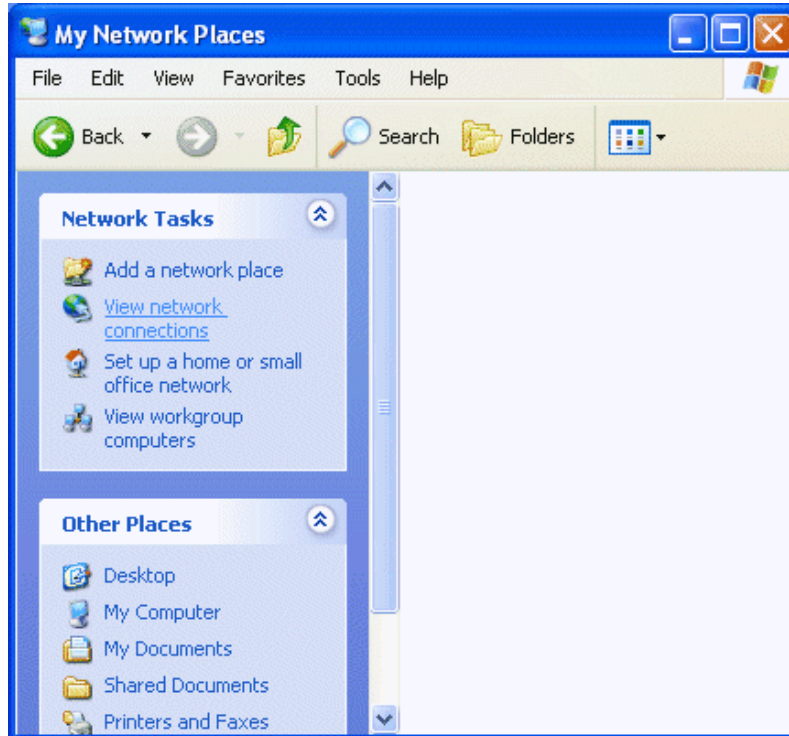
1. Click the **Start** button and click **My Computer**



2. Click **My Network Places**



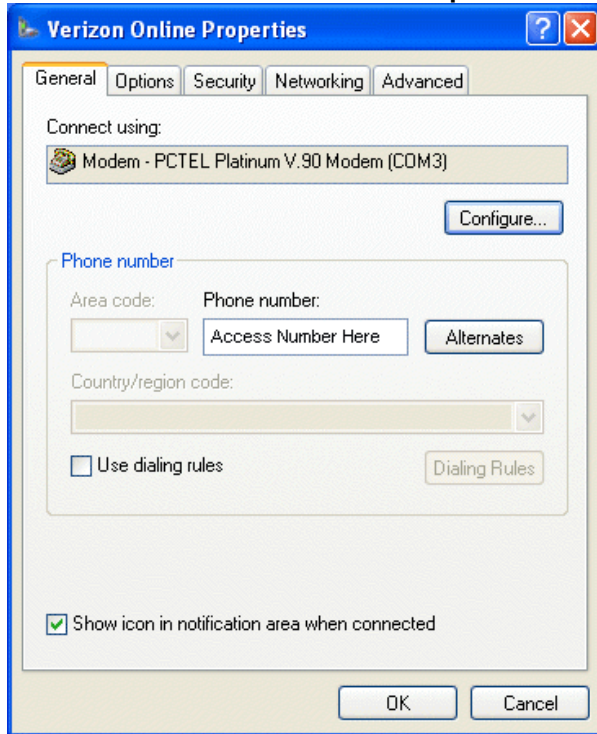
3. Click **View network connections**



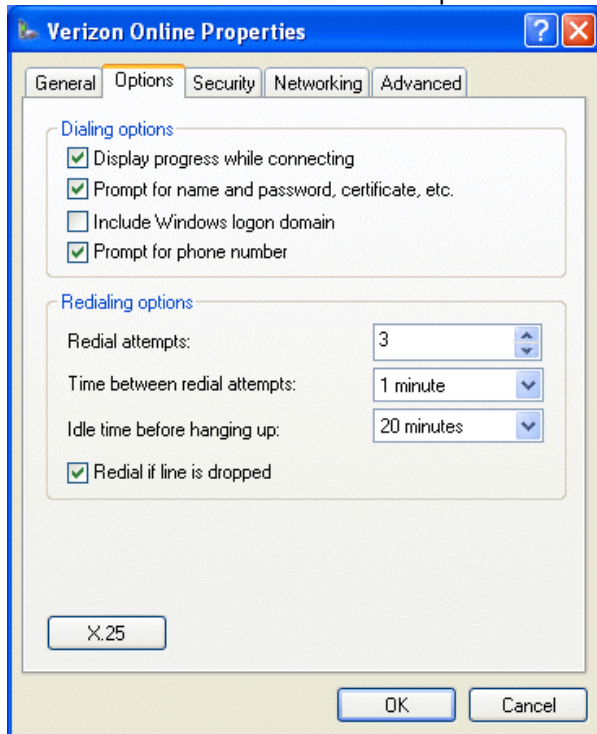
4. Right-click the **Hawaiian Telcom** connectoid and click **Properties**



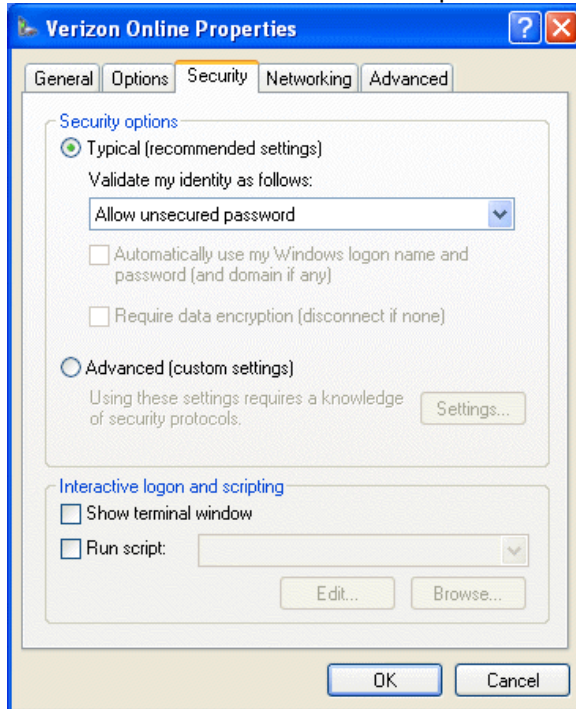
5. Enter the access number. Click the **Options** tab



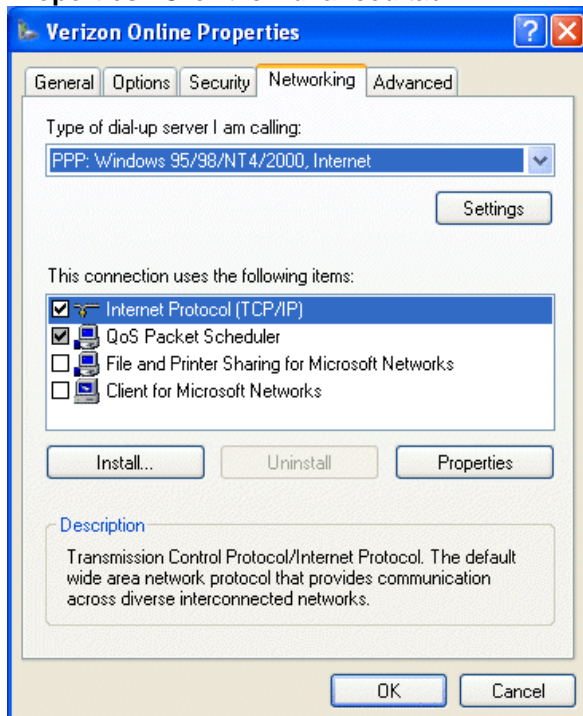
6. Use the default and recommended options. Click the **Security** tab



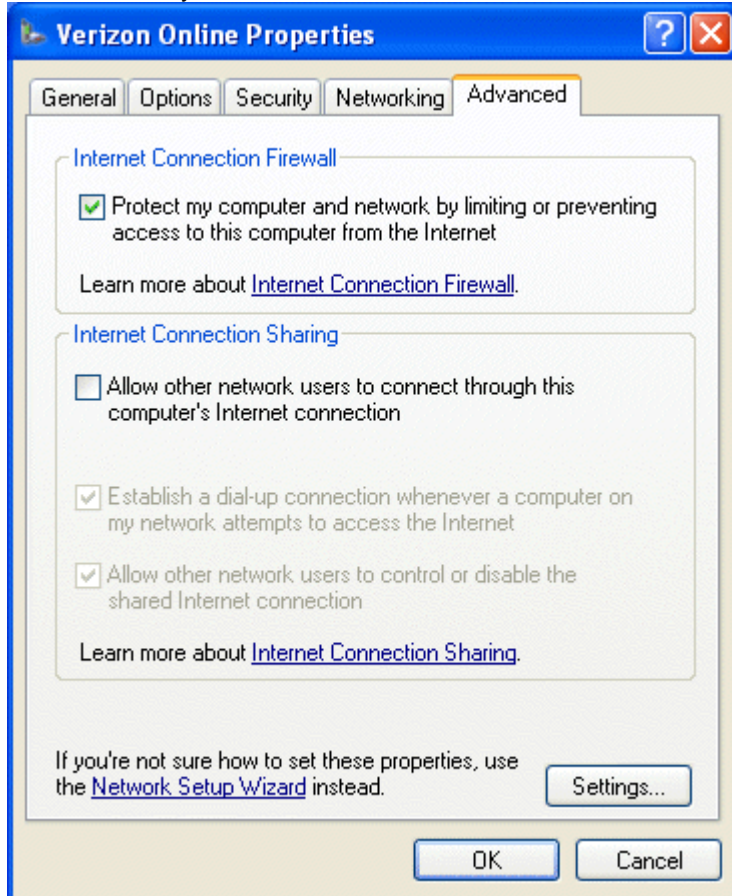
7. Use the default and recommended options. Click the **Networking** tab



8. Verify that **PPP: Windows 95/98/NT4/2000, Internet** is chosen as the **Type of dial-up server I am calling**. **Internet Protocol (TCP/IP)** should be checked. Select **Internet Protocol (TCP/IP)** and click **Properties**. Click the **Advanced** tab



9. Check **Protect my computer and network by limiting or preventing access to this Computer from the Internet** if you wish to use Windows XP's built-in firewall. Click **OK** and close all windows



--- EOD ---