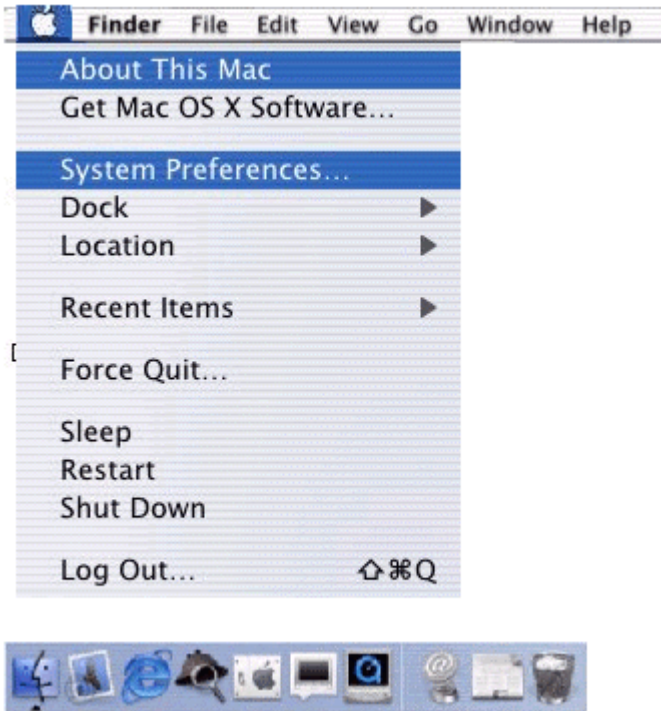
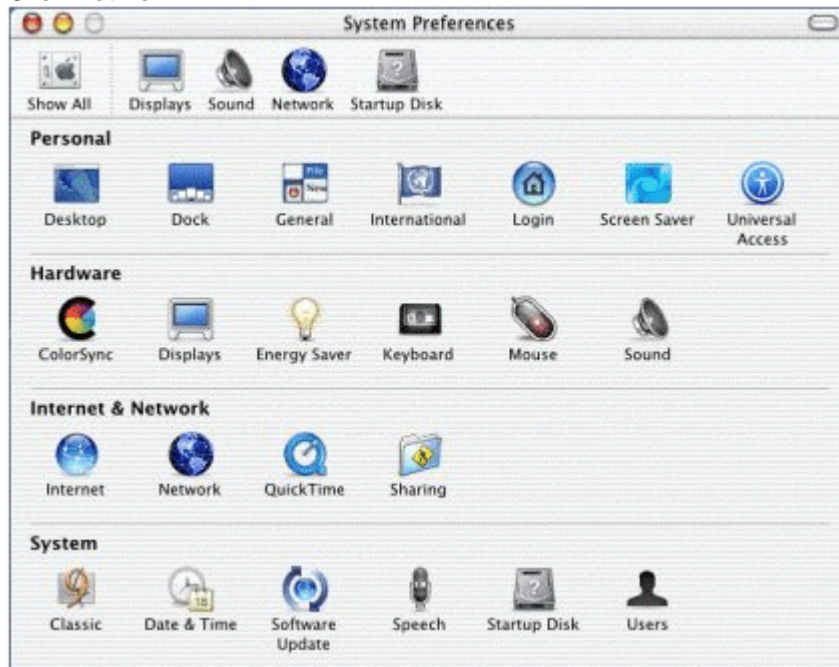


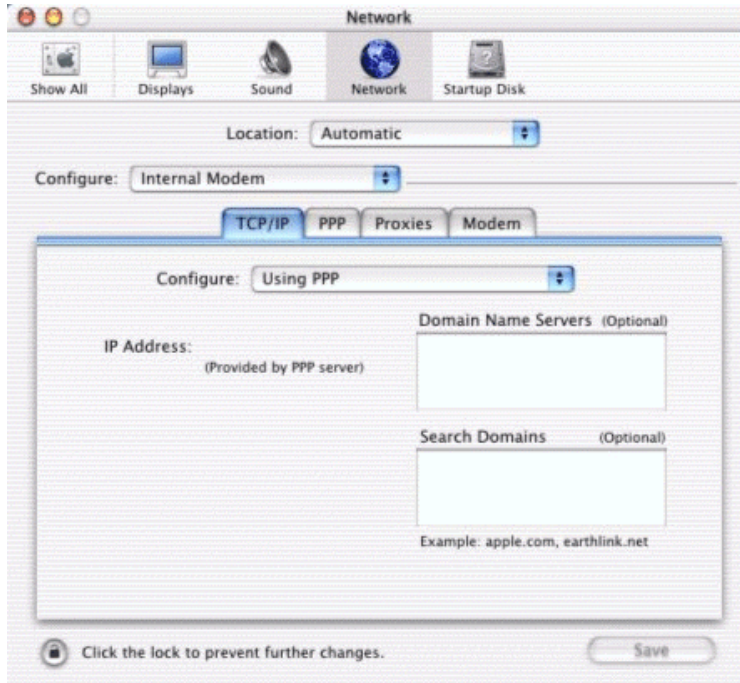
1. Click **Apple** then **System Preferences**



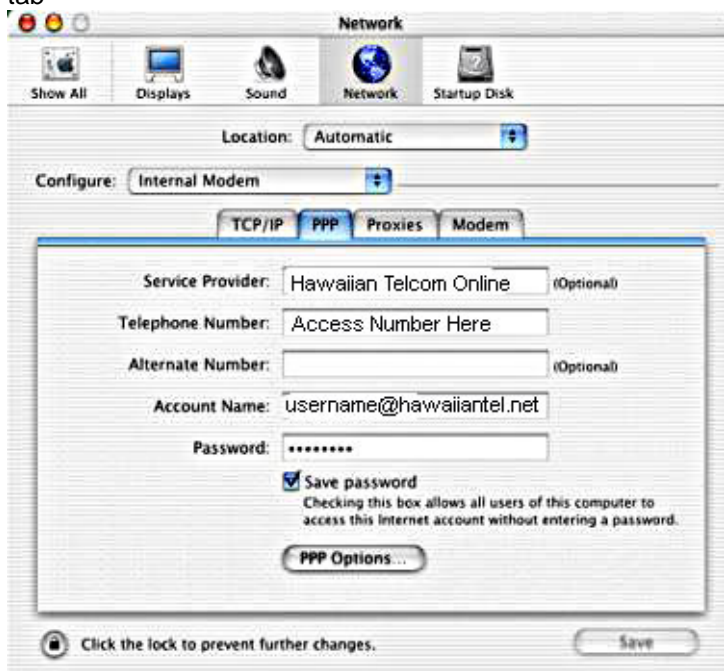
2. Click **Network**



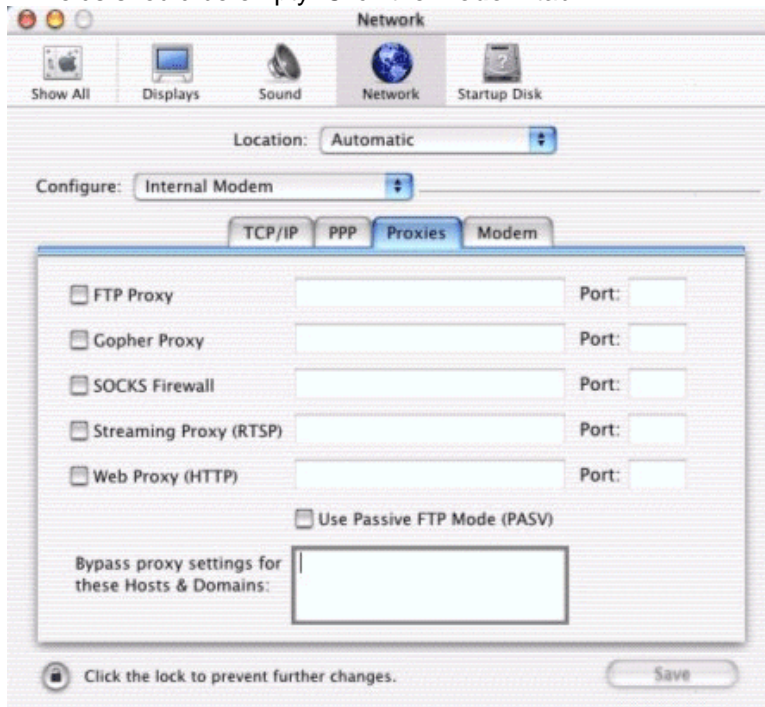
3. Select **Internal Modem** in the main **Configure** field. Select **Using PPP** in the **Configure** field on the **TCP/IP** tab. Click the **PPP** tab



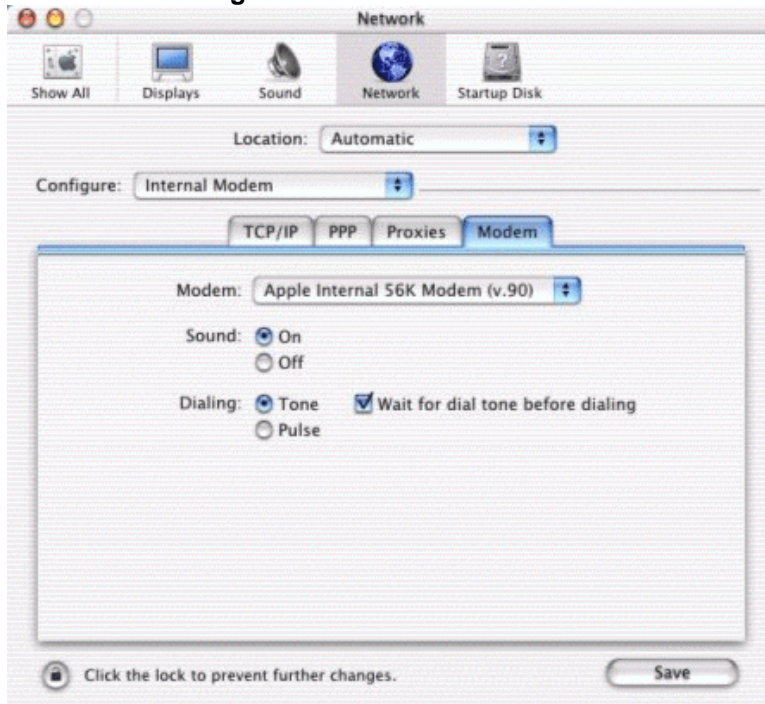
4. Enter the local Hawaiian Telcom access number. Enter your Hawaiian Telcom User ID (full @hawaiiantel.net email address) in the **Account Name** field. Enter the Password. (You may check **Save Password** if you want the system to save your password.) Click **PPP Options**. Click the **Proxies** tab



5. All fields should be empty. Click the **Modem** tab



6. Select the correct Modem. Sound is an optional choice. Dialing should be set as **Tone**. **Wait for dial tone before dialing** should be checked. Click the **Save** button if you made any changes



--- EOD ---