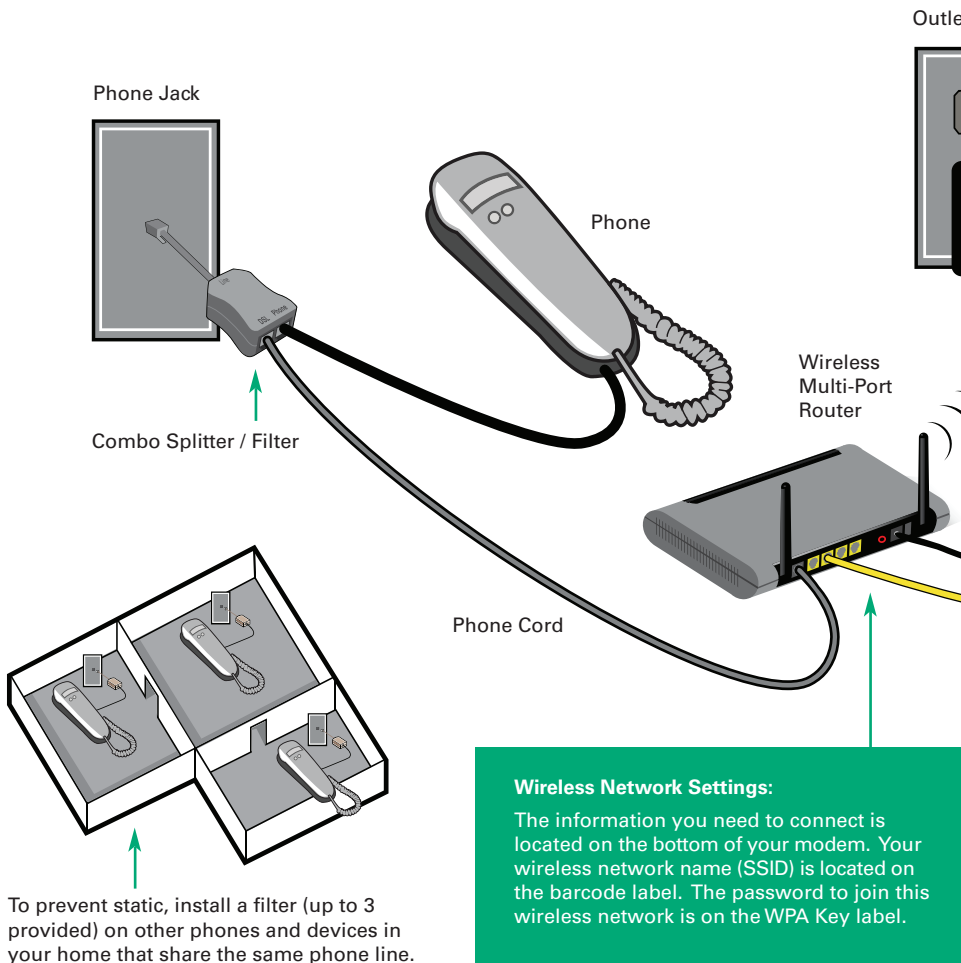


# Installation Diagram

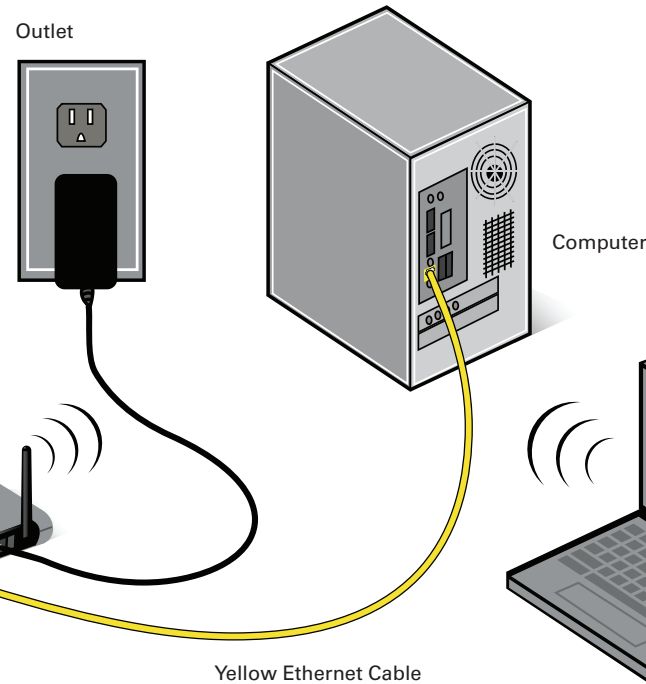
## Motorola 2247 Wireless Router

### 1 Splitter and Filters



To prevent static, install a filter (up to 3 provided) on other phones and devices in your home that share the same phone line.

### 2 Connect Modem



### 3 Connect Computer

Link your desktop computer or laptop to the router using the wireless (WiFi) connection or yellow Ethernet cable. Several devices can be connected to the router at once via WiFi and up to 4 devices using Ethernet cables. Your computer must have WiFi capability in order to connect wirelessly to the router.

### 4 Test Your Connection and Register

- Wait until the DSL, Power and Internet lights on the modem are green. If the light labeled DSL is still blinking after one minute, please call customer support at 643-4375.
- Open your web browser and go to: [hawaiiantel.com/hsconnect](http://hawaiiantel.com/hsconnect)
- Congratulations, you're online!

### 5 Personalize Your Wireless Network

Follow the steps at [hawaiiantel.com/hsconnect](http://hawaiiantel.com/hsconnect) to customize your wireless network, set up your wireless security settings and read Quick Tips to maximize the effectiveness of your wireless modem.