

# Hawaiian Telcom Internet Quick Start Guide

Page 5168

## Welcome

Thank you for choosing Hawaiian Telcom High-Speed Internet, your connection to a whole new level of Internet enjoyment!

Your broadband service will be activated on the service-ready date you were given when you placed your order.

This guide will walk you through step-by-step installation instructions. Getting started is easy!

## For more information

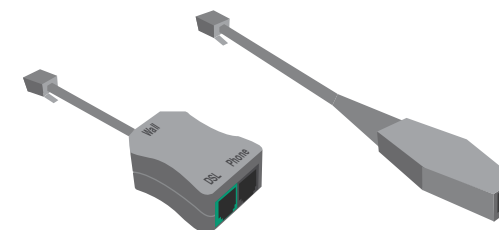
Visit [hawaiiantel.com/internetsupport](http://hawaiiantel.com/internetsupport) or call our 24/7 Local Internet Support Team at 643-6111.

Looking for FREE WiFi access points? Hawaiian Telcom offers the most in the state.

Click on the WiFi Locations link at [hawaiiantel.com/wifi](http://hawaiiantel.com/wifi) for a complete listing.



## What's included



Combo Splitter / Filter (1) Phone / Fax Filter (3)

Phone Cord (1)



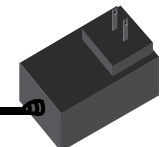
Yellow Ethernet Cable (1)



AC Adapter (1)

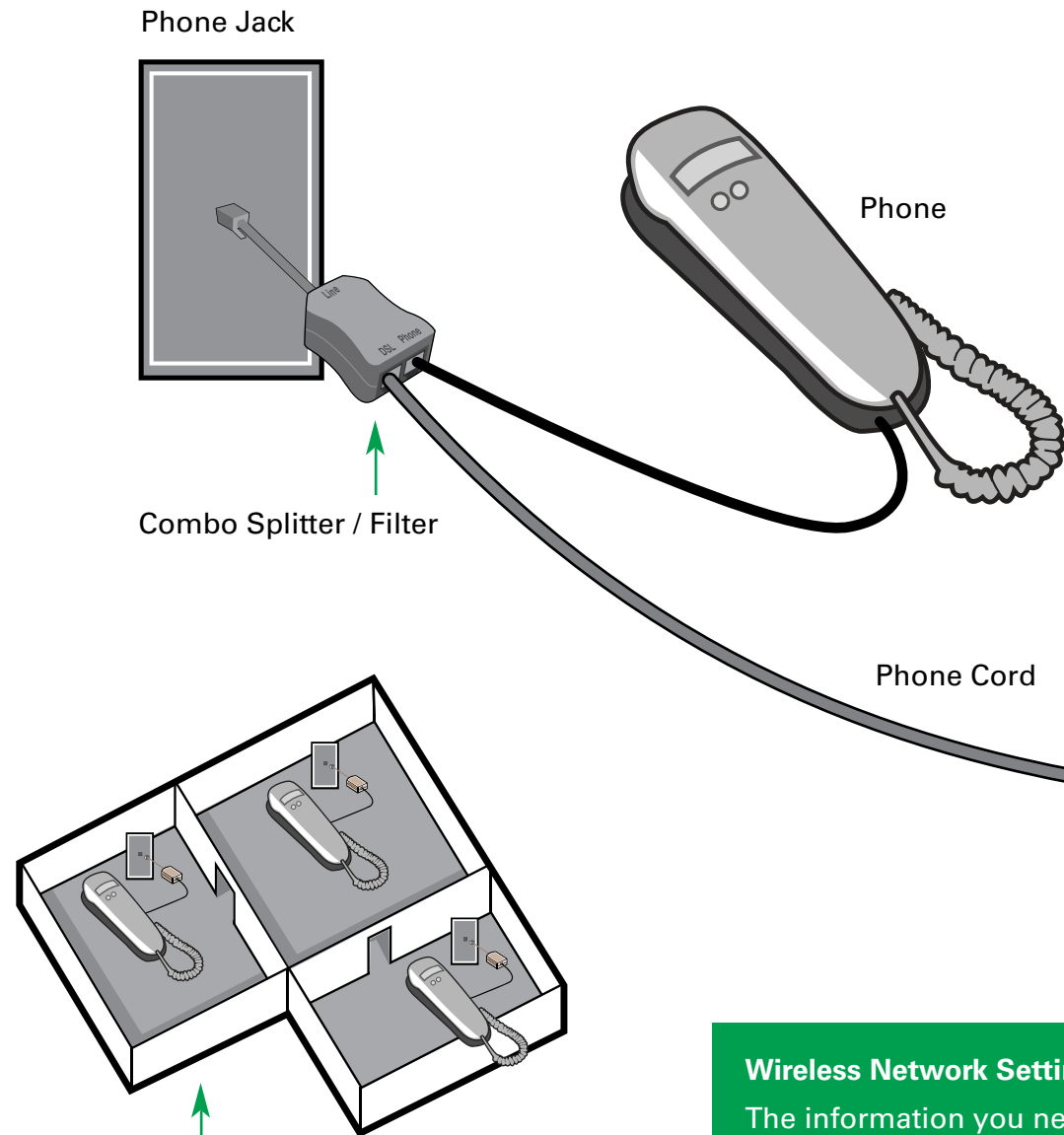


Wireless Gateway (1)



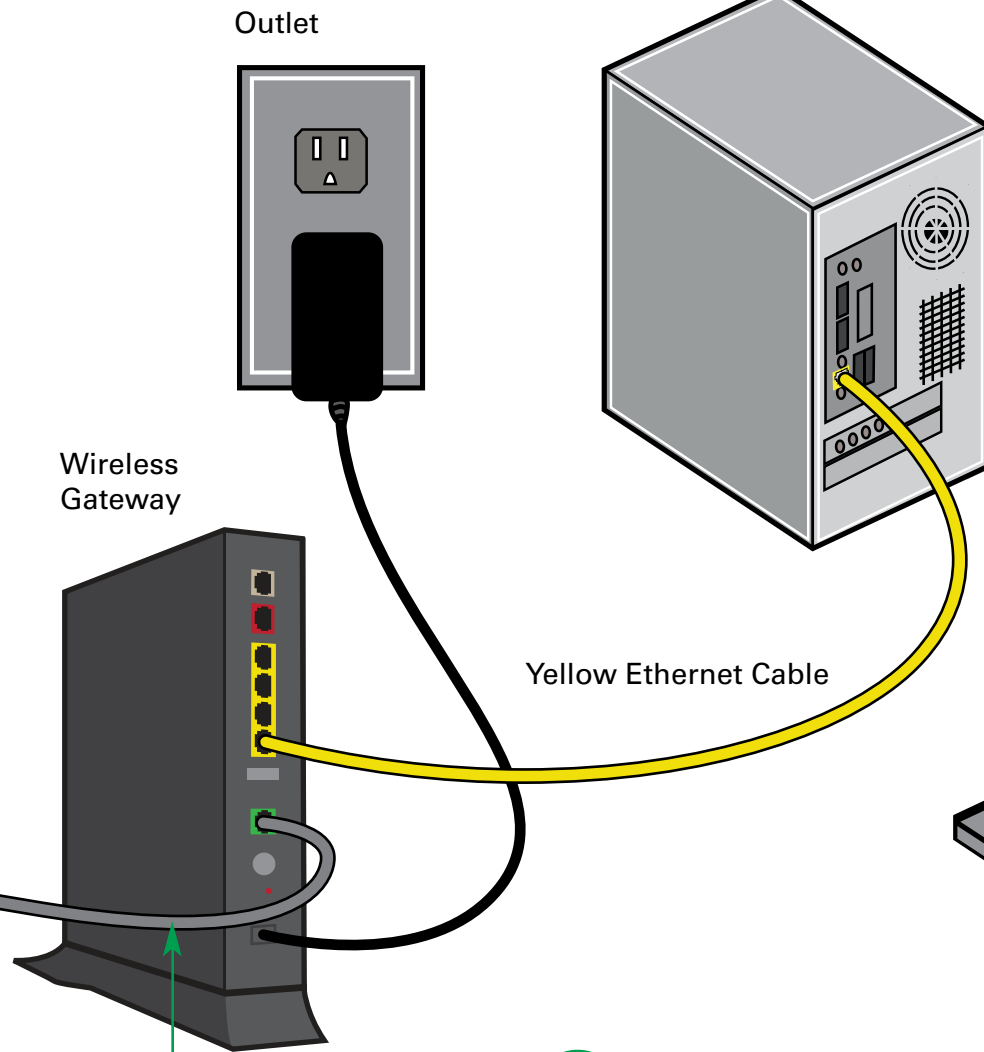
# Installation Diagram

## 1 Splitter and Filters



To prevent static, install a filter (up to 3 provided) on other phones and devices in your home that share the same phone line. Call 643-6111 if you need more filters.

## 2 Connect Wireless Gateway



### Wireless Network Settings:

The information you need to connect is located on the bottom of your wireless gateway. Your wireless network name (SSID) is located on the barcode label. The password to join this wireless network is on the WPA Key label.

## 3 Connect Computer

Link your desktop computer or laptop to the wireless gateway using the wireless (WiFi) connection or yellow Ethernet cable. Several devices can be connected to the wireless gateway at once via WiFi and up to 4 devices using Ethernet cables. Your computer must have WiFi capability in order to connect wirelessly to the gateway.

## 4 Test Your Connection and Register

- Wait until the DSL, Power and Internet lights on the wireless gateway are green. If the light labeled DSL is still blinking after one minute, please call customer support at 643-6111.
- Open your web browser and go to: [hawaiiantel.com/internetsupport](http://hawaiiantel.com/internetsupport)
- Congratulations, you're online!

## 5 Personalize Your Wireless Network

Follow the steps at [hawaiiantel.com/internetsupport](http://hawaiiantel.com/internetsupport) to customize your wireless network, set up your wireless security settings and read QuickTips to maximize the effectiveness of your wireless gateway.

This configuration applies to both WINDOWS and MAC users.