

Hawaiian Telcom Internet Quick Start Guide

Comtrend 5072

Welcome

Thank you for choosing Hawaiian Telcom High-Speed Internet, your connection to a whole new level of Internet enjoyment!

Your High-Speed Internet will be activated on the service-ready date you were given when you placed your order.

This guide will walk you through step-by-step installation instructions. Getting started is easy!

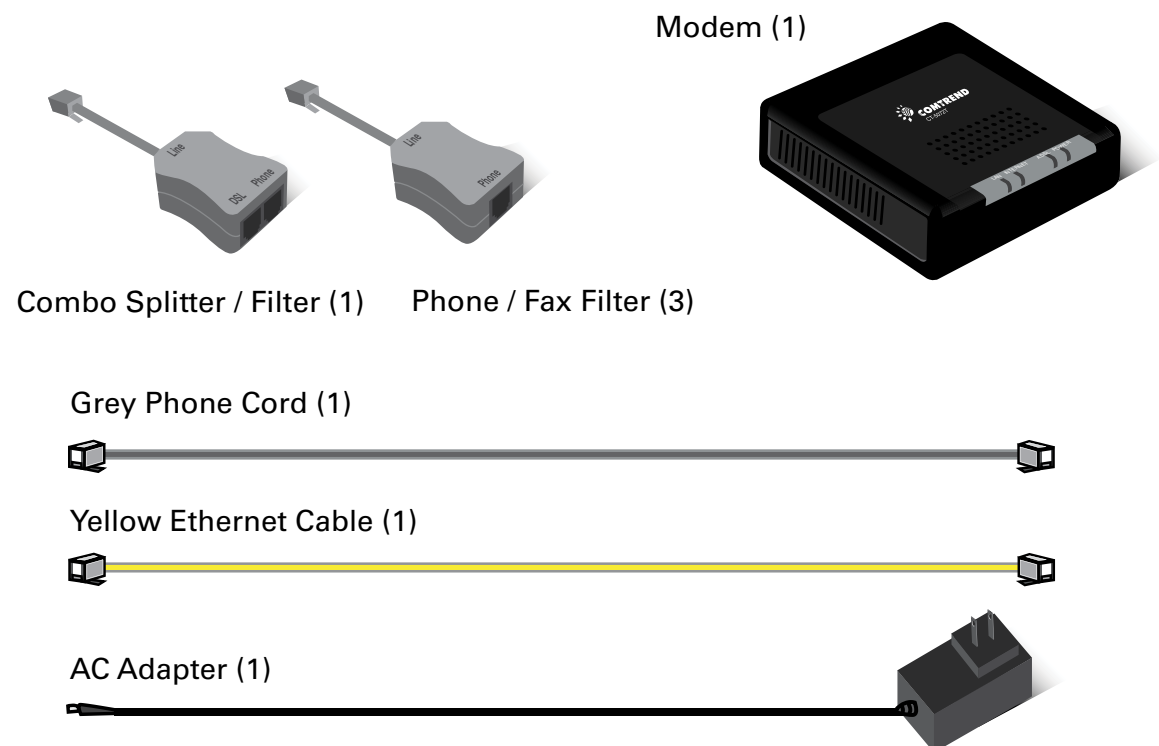
For more information

Visit hawaiiantel.com/internetsupport or call our 24/7 local Internet Support Team at 643-6111.

Looking for FREE WiFi access points? Hawaiian Telcom offers the most in the state. Click on the WiFi Locations link at hawaiiantel.com/wifi for a complete listing.



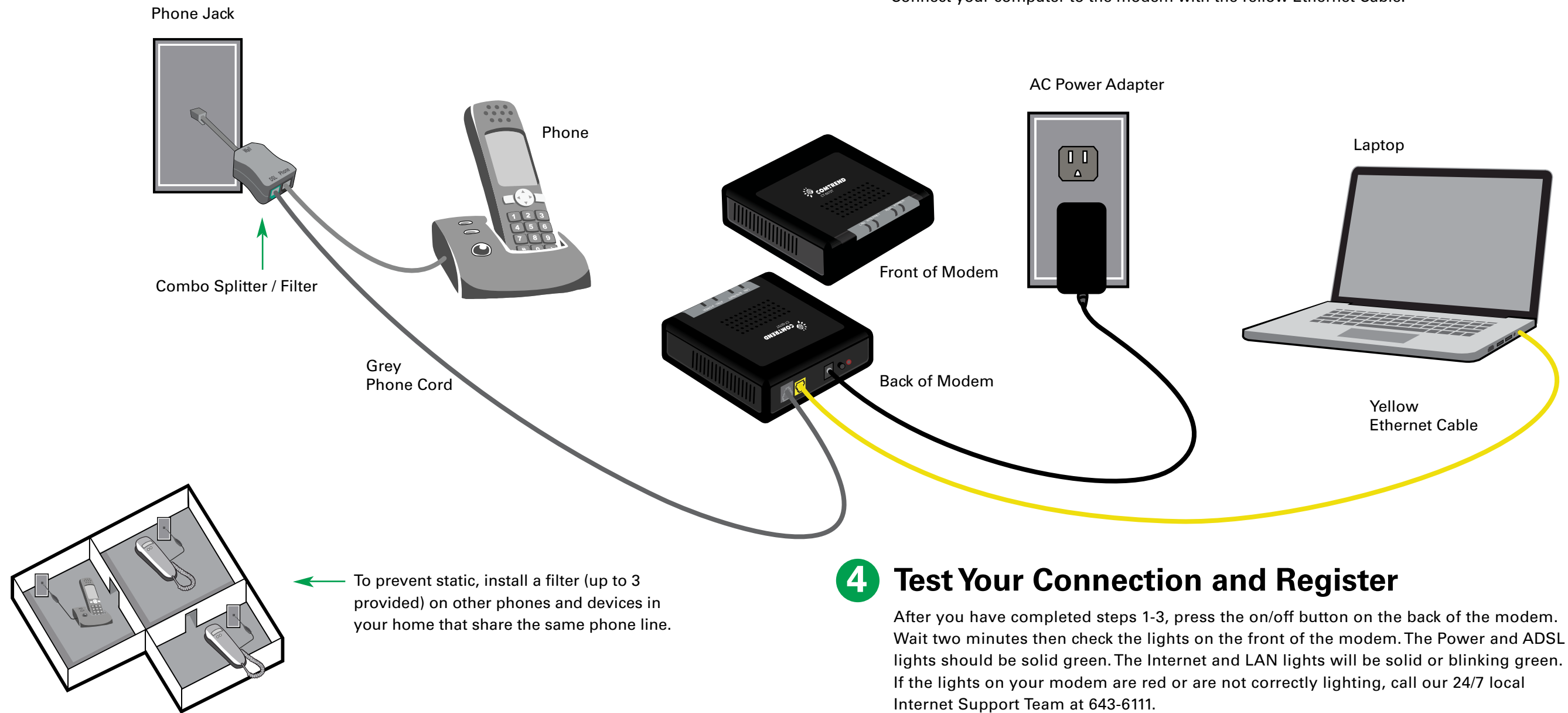
What's included



Installation Diagram

1 Splitter and Filters

Plug the Grey Phone Cord directly into a live phone jack. If you also want to connect a telephone to the same phone jack, first plug in the Combo Splitter/Filter then plug the Grey Phone Cord into the jack labeled DSL. To prevent static, install a Phone/Fax filter on all corded and cordless phones, fax machines and devices in your home that share the same phone line. If you need more filters, call 643-6111.



2 Connect Modem

Connect the other end of the Grey Phone Cord to the modem. Connect the AC Power Adapter to the modem and plug it into a power outlet.

3 Connect Computer

Connect your computer to the modem with the Yellow Ethernet Cable.

4 Test Your Connection and Register

After you have completed steps 1-3, press the on/off button on the back of the modem. Wait two minutes then check the lights on the front of the modem. The Power and ADSL lights should be solid green. The Internet and LAN lights will be solid or blinking green. If the lights on your modem are red or are not correctly lighting, call our 24/7 local Internet Support Team at 643-6111.

From your web browser, go to hawaiiantel.com/internetsupport to test your connection and register for your free email account.

This configuration applies to both WINDOWS and MAC users.